

HD patch cables, Category 6_A, FR-LSZH

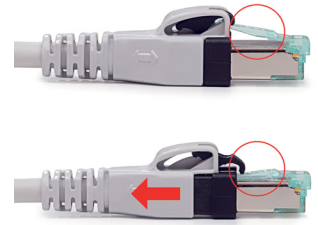
P/N: KEL-C6A-P-xxxHD

10
Gigabit

Cat.6_A
interoperable

500
MHz

FR-LSZH



Features

- "Push & Pull" boots secure easy connection and disconnection
- suitable to use even in high-density patch fields
- individually shielded pairs with stranded wires, overall copper braid, flame retardant - low smoke, zero halogen sheath
- connector RJ45 complies with IEC 60603-7 standard by its dimensions and transmission features
- enables transmission of all high-speed protocols including 10GBASE-T
- guarantees a bandwidth of 500 MHz
- perfectly shielded against Alien Crosstalk and electromagnetic interference

Application

- primary (Campus), secondary (Riser), tertiary (Horizontal)
- IEEE 802.3: 10BASE-T; 100BASE-T; 1000BASE-T; 10GBASE-T
- IEEE 802.5: 16 MB; ISDN; FDDI; ATM
- high bandwidth digital applications with low BER

Length variants

0,5 m	P/N: KEL-C6A-P-005HD
1 m	P/N: KEL-C6A-P-010HD
1,5 m	P/N: KEL-C6A-P-015HD
2 m	P/N: KEL-C6A-P-020HD
3 m	P/N: KEL-C6A-P-030HD
5 m	P/N: KEL-C6A-P-050HD
7 m	P/N: KEL-C6A-P-070HD
10 m	P/N: KEL-C6A-P-100HD
15 m	P/N: KEL-C6A-P-150HD
20 m	P/N: KEL-C6A-P-200HD

Construction

Conductor	stranded bare copper wire, AWG 27/7	
Sheath	flame retardant - low smoke, zero halogen (FR-LSZH)	
Contact pin material	phosphor-bronze alloy coated with 50 µ of gold	
Boots material	polycarbonate	
Outer cable diameter	5,8 mm	
Colour (standard)	cable	gray RAL 7035
	boots	gray RAL 7035

Mechanical properties

Insertion / extraction cycles	min. 750
Temperature range	-25 °C to +60 °C
Min. bending radius	25 mm

Electrical properties (connector)

Voltage rating	—	125 V AC
Current rating	—	1 A
Contact resistance	100 mA (DC or 1 000 Hz)	50 mΩ max.
Insulation resistance	100 V DC	100 MΩ min.

Electrical properties (cable)

Loop resistance	—	290 Ω/ km
Resistance unbalance	—	≤ 3 %
Insulation unbalance	(500V)	≥ 5 000 MΩ x km
Characteristic impedance	at 100 MHz	100 ± 3 Ω
Delay skew	nominal	10 ns/100 m